

The Bedford Audubon Society Newsletter

Volume 60, Number 3, Fall 2010
Celebrating 97 Years of Conservation 1913-2010

Northward Bound: A Six-Month Journey on the Appalachian Trail From Georgia to Maine

With Dan Aitchison

Wednesday, September 15, 7:30 P.M.

Katonah Memorial House, 71 Bedford Road, Katonah

COME EXPERIENCE THE STORIES, adventures, sights and sounds of the Appalachian Trail, as Dan Aitchison presents his slideshow on the 2,174 mile trek north. Untamed wildlife, unpredictable weather, too much gear, and the unique people along the way make for a humorous and interesting program.

Dan Aitchison is the curator of wildlife with Westchester County, in charge of coordinating and managing the Westchester County Pilot Deer Management Program. He earned his bachelor's degree in biology from Cornell University. After graduating in 2004, Dan felt that it was the time to do something "big," so following his girlfriend Heather's dream, they formulated a plan that would take the next six months of their lives—a 2,174 mile hike from Georgia to Maine on the famed Appalachian Trail.



This program is free and open to the public. Katonah Memorial House is wheelchair accessible. Please do not block Fire Department access. Park alongside the meeting house side of the driveway.

Please see page 6 for the complete schedule of Bedford Audubon events

President's Letter

Fellow birders and members of the Bedford Audubon Society: I am proud to have been elected by the Board to fill the challenging position of Society President. I will do my very best to make our almost one hundred year-old organization a stronger and more successful one. I encourage you all to share with me your ideas for a better Bedford Audubon and a cleaner local environment.



Walt and Jackie Fowler in Panama

Our picnic on July 24 was a wonderful event, allowing us to meet our neighbors, gardeners, friends, and supporters. Wonderful stories were heard and shared. A big "Thank You" to Joan E. Becker and all the volunteers who made the day such a success.

I encourage you to visit our headquarters at Bylane Farm to see our beautiful new "front yard." The combined efforts of Nannette Orr (who designed the garden), Bonnie Barrett, Ted Raymond, and many other dedicated volunteers have transformed it into a beautiful native plant garden. Come take the new self-guided tour and learn how going "native" can enhance your yard and contribute to a healthier environment.

Remember the over-used simile "canary in the coal mine?" Birds really are the early warning system for even local and regional environmental problems. Along with scientists and volunteers along flyways across the country, Arthur Green, Tait Johansson, and volunteers will again man the hawk watch site in Bedford Corners every day from mid-August through November to count migrating raptors. Their data are combined with that from many other sites and become a measure of the health of apex raptor populations. We are proud to be contributing to this scientific study.

Last year, Bedford Audubon convinced several landowners in North Salem to delay their annual hay harvests by several weeks, so Bobolink nestlings could mature and fledge. The local population of Bobolink almost tripled, testifying to the success of delayed mowing for this declining grasslands species. This year even more landowners participated in the program.

It is my vision that Bedford Audubon through its projects and educational programs will continue to effect changes in our local communities reconnecting people to nature and the earth and resulting in significant future benefits to our shared environment. Small changes, large benefits. As is evident from the examples mentioned above, volunteers are the backbone of Bedford Audubon; we cannot function without them. Please call us if you think you can help turn small changes into large benefits. I look forward to seeing you soon.

Walter Fowler, President



The Bedford Audubon Society Newsletter

Fall 2010, Volume 60, No. 3

The newsletter, USPS #61, is published quarterly by the Bedford Audubon Society, Inc.
35 Todd Road, Katonah, NY 10536

Officers 2010-2011

Walter Fowler: *President*, 914-962-2177
Joan E. Becker: *Vice President*, 914-232-4806
Theodore Anderson: *Treasurer*, 914-238-5168
Janet Andersen: *Secretary*, 914-763-3615

Board of Directors 2010-2011

Carol Cioppa: 914-764-1549
Arthur W. Green: 914-752-2993
Christopher W. London: 914-764-5105
Nannette F. Orr: 914-232-3334
Helle Raheem: 914-962-4344
Marilyn Shapiro: 914-764-4270
Adam Zorn: 914-244-0809

Committee Leadership

Communications: Helle Raheem, Chair, 914-962-4344
Communications: Richard Becker, Newsletter & Internet 203-323-0233
Communications: Tricia O'Donnell, Newsletter 914-232-5911
Development: Joan E. Becker, Chair, 914-232-4806
Education: Linda Burke, Chair, 914-533-6343
Events: Joan B. (JB) Becker, Co-Chair-Field Trips 203-323-0233
Events: Laura Jaffe, Co-Chair-Programs 914-232-5258
Events: Joan E. Becker, Trip Registrar, 914-232-4806
jebecker@bedfordaudubon.org
Events: Jane Shumsky, Hospitality
Executive: Walter Fowler, Chair, 914-962-2177
Finance: Theodore Anderson, Chair, 914-238-5168
Great Swamp: James Utter, Chair, 845-878-0081
Hawk Watch: Arthur W. Green, Chair, 914-752-2993
Henry Morgenthau Preserve: Marilyn Shapiro, Chair, 914-764-4270
House: Carol Cioppa, Chair, 914-764-1549
Native Plant Garden: Bonnie Barrett, Chair
Science: J. Alan Clark, Chair, 253-640-1640
Seed Sale: John Erickson, Co-Chair, 914-273-6967
Seed Sale: Steve Ricker, Co-Chair, 914-234-2934

Staff

Executive Director: Jim Nordgren, 914-232-1999
Naturalist: Tait Johansson, 914-232-1999
Volunteer Office Manager: Laura Jaffe, 914-232-5258

Contact Information

Chapter Office 914-232-1999
BAS Website www.BedfordAudubon.org
Our E-Mail address is: Info@BedfordAudubon.org

Our Mission

The mission of the Bedford Audubon Society is to promote conservation and protection of wildlife habitats in the northern Westchester and eastern Putnam region through education, advocacy, nature study, and birdwatching.

BAS CALENDAR OF EVENTS

Please register with Joan E. Becker:
jebecker@bedfordaudubon.org or 914-232-4806

See Page 5 for a List of Our Special Hawk Programs

9/8	10 A.M.-4 P.M.	"Hug-the-Hudson"-Excursion to NYC's High-Line and Fort Tryon Parks
9/15	10 A.M.-3 P.M.	Sharon Audubon Center and McEnroe Farm
9/15	7:30 P.M.	Northward Bound: A Six-Month Journey on the Appalachian Trail/Katonah Memorial House
9/17	7 A.M.-11 A.M.	Field Trip to Greenwich Point Park
9/25	8 A.M.-1 P.M.	Field Trip to Ferncliff Forest, Rhinebeck, NY
9/30	8 A.M.-2 P.M.	Lighthouse Point Park Hawk Watch, New Haven
10/6	10 A.M.-2:30 P.M.	Stonecrop Gardens and the Glynwood Center
10/13	7:30 P.M.	Lessons From a Bird's Brain/Katonah Memorial House
10/19	10 A.M.-1 P.M.	Nature Hike at Mountain Lakes Park, North Salem
10/23	7:30 A.M.-11:15 A.M.	Bird Walk at Croton Point Park
10/28	10 A.M.-12 NOON	"All Things Fungal" Cranberry Lake Preserve, West Harrison
11/3	TBA	"Magical Mystery Tour"-a "Leader's Choice" Trip
11/9	7:30 A.M.-11:15 A.M.	Bird Walk at Croton Point Park
11/10	7:30 P.M.	The Asian Long-Horned Beetle and Other Alien Tree-Killers/Katonah Memorial House
11/17	10 A.M.-3 P.M.	Beacon Institute at Dennings Point State Park
11/20	7:40 A.M.-12:30 P.M.	Edith Read Sanctuary and Marshlands Conservancy, Rye
12/8	7:30 P.M.	Identification of Woody Plants in Winter/Katonah Memorial House

Be a Genuine Part of Bedford Audubon: Donate Cloth for a Rag Runner at Bylane Farm

As part of the ongoing renovation of Bylane, we will create an old-fashioned rag runner, similar to one that once graced the stairs when previous owners Foxy and Helen Parker lived there. It was Mrs. Parker's inspiration to have the community donate the cloth for the stair runner, and thus become an integral part of Bylane and of Bedford Audubon. She has also been involved in selecting the design and colors for the runner.

BAS Board director Carol Cioppa contacted the Weaving Center of Tarrytown at Marymount Convent, which will prepare the material and weave the runner.

We are asking for:

- 100% cotton materials-woven, not knitted-e.g., sheets, shirts, trousers, etc. and scraps of at least 5" x 7"
- No upholstery material, flannel, corduroy, or other heavy material. No T-shirts or polo shirts
- Colors-blues (light and dark); beiges and browns; moss greens; paisley, solids and prints.

Please wash all items first. Then remove buttons and zippers. Approximately 30 lbs of cloth is needed by the end of September. Deliver to Bylane Farm, 35 Todd Road, Katonah, phone 914-232-1999. All donors will be recognized.



Members' Picnic July 24



It was a scorching 95 degrees, but that did not deter more than 85 BAS members and friends from gathering at Bylane Farm for an afternoon of good food and good company. Guests had an opportunity to visit Bylane's organic vegetable garden as well as our native plants garden, and they were introduced to the newest member of the BAS family: an injured Red-Tailed Hawk, recently named "Scarlett," residing in the barn and the newly built flight cage. Development chair Joan E. Becker had arranged for a scrumptious spread of sandwiches, salads, and desserts, and Aries Automotive in Somers sponsored our Hot Dog Cart, cheerfully manned by Quinnipiac University student Andrew Gill of Pound Ridge. The Goldens Bridge A&P graciously donated beverages and ice—an absolute life saver in this heat—and many members generously contributed to defraying the costs of the picnic. Numerous donations of cotton cloth were made to our ongoing rag runner project (see page 2 for details). A raffle was drawn, and the lucky winner, Jack Goldberg, took home a basket of Bylane-grown produce and flowers. Thanks to Joan's initiative and tireless work preparing for this occasion, as well as the assistance of many volunteers, the inaugural Members' Picnic was a huge success. We hope to make it an annual tradition.

Theodore (Ted) Anderson, Bedford Audubon's New Treasurer

The Board of Directors at Bedford Audubon is very pleased to welcome Theodore (Ted) Anderson as its new treasurer. Ted was in the investment business for the past 42 years; first at John W. Bristol, managing university endowment funds, then at Argus Research as a director of research, and lastly as a portfolio strategist at the Ford Foundation from which he has recently retired.



Ted likes to spend his free time fly fishing, birding, studying foreign languages, and traveling. He became involved with conservation issues at an early age, growing up in northern California, going birding on San Francisco Bay, and being active in the Boy Scouts. He has a BA from Stanford and an MBA from UC Berkeley. Through organizations such as the Sierra Club and Trout Unlimited, Ted has become acutely aware of the deterioration of our environment. He joined the Audubon Society because it has a visible and responsible presence in the environmental movement. Ted resides in Chappaqua with his wife, Sigrid.

We would like to take the opportunity to thank Mark Patek for his three years of outstanding service as treasurer of the organization.

Around Bylane

If you've visited Bylane this summer you can't help but notice the whirlwind of energy and activity here. With our new town permit to operate as a nature center, we've been able to offer a wide range of outdoor educational programs for adults and families with kids of all ages.

We've added new entrance signs and a parking area at the top of the driveway so that visitors feel even more welcome. And we've updated our trail maps and put them in new transparent boxes so that you and your family will feel at home exploring Bylane's seven miles of hiking trails, the expanded self-guided native garden tour, or the new Quest self-guided nature tour. The Quest trail opened in May with the help of the Westchester Land Trust and Jennifer and Roger Schwartz through the Louis and Anne Abrons Family Foundation. We've also added tree and shrub identification labels along a stretch of the Pond Trail and throughout the native garden so that people can learn more about these wildlife-friendly plants. Be sure to experience the new native garden just planted in front of Bylane thanks to a generous grant from the Leon Levy Foundation. We've torn up our non-native lawn and pachysandra and replaced it with bird-friendly flowers and shrubs. We hope that after seeing these beautiful plants up close, homeowners will be inspired to naturalize their own yards.

We've also transformed our barn into a raptor center and with a U.S. Fish and Wildlife permit we're now able to keep a non-releasable Red-tailed Hawk for educational purposes. Named Scarlett, she's happily settled in. Children and adults can see this magnificent bird face to face and then go visit her cousins in the wild that are now migrating through our Chestnut Ridge Hawk Watch in Bedford Corners, open every day August through December.

I hope you'll visit Bylane soon, we're open this fall on Monday through Saturday during normal business hours and our grounds are open year-round, dawn to dusk. I hope to have the chance to show you around.

Jim Nordgren, Executive Director



Water...Who Needs It? By Casey Hagg



Casey Hagg performing a stream velocity test at Kimberly Bridge at the Ward Pound Ridge Reservation. Photo by Melinda Battle.

We all know that humans need water to live, but how much do we all know about the water that we walk by or drive by every single day? Truth is that I did not know much before I started monitoring water quality with the Westchester County Citizens' Volunteers Monitoring Program (CVMP). As part of CVMP, I have personally measured water parameters at local streams such as Brady's Brook on Todd Road, Kimberly's Bridge in the Ward Pound Ridge Reservation, and Truesdale Inlet on Truesdale Lake. Parameters we measure include phosphate concentra-

CONTINUED ON PAGE 4

Visit our website at www.bedfordaudubon.org

tion, dissolved oxygen concentration, nitrate concentration, and salinity along with many others.

As part of my summer internship with the Bedford Audubon Society I have also been looking at stream and lake data from years past in an attempt to find any significant patterns or relationships. In the future, the Bedford Audubon Society plans to publish the results from this study to determine whether local water quality is improving or worsening. We plan to meet with county officials to discuss further research options. Additionally, we plan to use the results for educational purposes, raising community awareness.

Studying water quality has been an interesting experience and it has made me think twice about the quality of the water that I drink every day. Only 3% of the water on earth makes up our fresh water and ground water, and humans are rapidly polluting it. Although most of our minds are focused on oil right now, water deserves our attention and care as well. As the saying goes “we all live downstream,” so remember to take care of the water bodies near you! To learn how contact the Bedford Audubon Society.

Furthermore, my summer with the Bedford Audubon Society has been a unique, fun filled one. I have had the opportunity to learn about companion planting and water quality, visit other influential farms in the lower Hudson Valley, and work with a variety of people from little kids to professional birdwatchers. I would strongly recommend this experience to anyone, young or old. If you would like to volunteer or intern for the Bedford Audubon Society contact Jim Nordgren!

Casey Hagg was a summer intern at BAS and is studying environmental engineering at Cornell University (class of 2012).



Night Migration

If you have ever found yourself staring at the ceiling a little after 3 A.M. in spring or fall and found yourself surprised to hear a flock of Canada Geese cutting through the darkness over your home, then we don't need to tell you that some birds migrate at night. In fact, unlike hawks and other birds of prey, nearly all songbirds are nocturnal migrants. This fall, Bedford Audubon will be monitoring nocturnal avian migration using sensitive microphones strategically placed both at our headquarters in Katonah and at Westmoreland Sanctuary, located directly across the street from our hawk watch platform at the Arthur W. Butler Sanctuary in Bedford Corners. One of our partners in this project is area high school student Benjamin Van Doren, who, mentored by the Cornell Lab of Ornithology, is conducting a regional study on avian morning flight. Acoustic monitoring is quickly becoming a viable conservation monitoring tool that can provide important insights into the habits and health of our songbird populations, and we are proud to be one of the few Audubon chapters in the nation to be involved in this exciting area of research.



Trip Highlights



Twenty-one Bedford Audubon members picked their way through ripe raspberries at Amawalk Farm in Somers, New York on July 15, following Bonnie Barrett's interesting guided walk through nearby Lasdon Park and Arboretum. New Bedford Audubon member Paul Dolgert enjoys the day.



Our band of thirteen BAS birders was anything but unlucky on May 11 when we visited Central Park, urban oasis on the spring migratory route. Thanks in large part to New York City guest leader Douglas Kurz (mid-photo in light pants and dark sweater), a first-rate warbler spotter, we had an unforgettable day with dozens of species seen and enjoyed by all. Highlights: Cape May, Hooded, Wilson's, and Bay-breasted Warblers; Spotted Sandpiper, Lincoln's Sparrow.



Members scan the beach looking for nestlings at BAS's first Nature's Nursery walk on June 30 at Breezy Point in Queens, N.Y. The walk lived up to its name as we were rewarded with sightings of baby Piping Plovers, American Oystercatchers, Common Terns, Black Skimmers, and Killdeer.

MAPS Bird Banding

By Tait Johansson



Summer 2010 was the second year of BAS's participation in the Institute for Bird Populations' continent-wide study of breeding bird populations called MAPS (Monitoring Avian Productivity and Survivorship). This study aims to identify the causes of long-term population declines in birds, especially those of “our” birds wintering in the tropics.

Many possible causes have been proposed for these declines, including fragmentation of forest on the breeding grounds here, loss of migration stopover habitat, and loss of habitat on the wintering grounds. Since neotropical migrants are in so many different places over the course of the year, it's often unknown even where the factors causing their decline are occurring. MAPS attempts to establish this through finding out roughly how many young a population is producing (productivity) and about how many adults are returning from the wintering grounds each spring (survivorship). In this way, we and other researchers hope to help identify where and how to focus conservation efforts on behalf of these birds.

From June to early August, ten “mist nets”, extremely fine, hard-to-see nets set up on a 50-acre study plot within BAS's Hunt-Parker Sanctuary, are operated roughly every ten days for six hours at a time, starting within 20 minutes of dawn, all per the exacting protocols of the MAPS study.

Two examples of neotropical migrants we band for the study: Veeries (*Catharus fuscescens*) winter in forested areas in the cerrado region of southern Brazil. This area is being opened to agriculture, which will likely result in more habitat loss for this species. We banded 26 Veeries last year, of which at least 7 made it back from Brazil to be recaptured this year. This year, we banded 18 new Veeries.

Wood Thrushes (*Hylocichla mustelina*) winter in lowland to middle elevation tropical forest from southern Mexico to Panama. These habitats are also under threat. We banded 14 Wood Thrushes last year, of which 5 returned from Mexico and were recaptured in our nets. This year, we banded 13 new Wood Thrushes.

Unique recaptures from last year (6 species, 18 individuals)

Tufted Titmouse	1	Veery	7
Wood Thrush	5	Gray Catbird	1
Common Yellowthroat	2	Norther Cardinal	2

Additionally, we captured for the first time and banded 97 individuals of 17 species this year:

Downy Woodpecker	5	Hairy Woodpecker	3
Northern Flicker	1	Red-eyed Vireo	1
Black-capped Chickadee	1	Tufted Titmouse	12
Carolina Wren	2	House Wren	1
Veery	18	Wood Thrush	13
Gray Catbird	10	Ovenbird	3
Common Yellowthroat	14	Eastern Towhee	2
Song Sparrow	9	Northern Cardinal	1
Brown-headed Cowbird	1		

We hope for more data from these banded birds returning next year. Many, many thanks to our volunteers—a dedicated, early rising band of banders, without whose help our MAPS project would not be possible.

Special Hawk Watch Programs
With Hawk Counter Arthur W. Green and
Naturalists Tait Johansson and Adam Zorn
Some Programs Co-sponsored by Westmoreland Sanctuary

Hawk Identification With BAS's Hawk Counter Arthur W. Green, Westmoreland Sanctuary, 260 Chestnut Ridge Rd, Bedford Corners Sunday, September 12, 2 P.M. – 3:30 P.M. Raptors are notoriously tricky to identify, even for seasoned birdwatchers. But simple techniques are all that is needed to identify hawks, eagles, falcons, and vultures, even at great distances. Arthur will discuss some of the methods he uses in his work as a hawk counter, and will show how you, too, can use these methods to confidently put a name to many of our area's birds of prey. No birdwatching experience required!

The weeks following this workshop bring thousands of migrating hawks through our area each year, so please don't miss out! Light refreshments will be served. Registration requested, but not required. 914-666-8448. Ages: 12 to Adult.

Arthur Green is Bedford Audubon's chief hawk counter, and you can find him on the watch platform from August 15 through December 1, 8 A.M. through 4 P.M. seven days a week (occasionally Tait Johansson will fill in). Arthur is also the committee chair for BAS's hawk watch program at Chestnut Ridge. He has studied raptors and raptor migration for several years and is a board member of

NorthEast Hawkwatch, the northeast chapter of the HMANA. He liaises with other hawk organizations in order to improve the quality of the data we collect, work on joint projects, expand education, and generally get people excited about raptor migration and the wonders and science behind it.

Fall Migration at Chestnut Ridge Hawk Watch, Arthur Butler Sanctuary, 261 Chestnut Ridge Road, Bedford Corners. BAS hawk counter Arthur W. Green and our naturalist Tait Johansson will be on hand to help identify migrating raptors and other species. Morning is the optimal time to see hawks flying low over the ridge, but sightings are possible all day.

Saturday, September 18, 9 A.M. – 11:30 A.M.

This should be the peak of the Broad-winged Hawk migration.

Sunday, September 26, 9 A.M. – 11:30 A.M.

This will likely be the tail end of the Broad-winged Hawk migration. Also expect to see accipiters and falcons.

Saturday, October 2, 9 A.M. – 11:30 A.M.

Red-tails and other hawks are definite possibilities, and a Bald Eagle or two may make an appearance at this time.

No registration necessary. Bring binoculars, and bring a bag lunch if you plan on staying later. Ages: 12 to Adult.

"Breakfast With the Hawks" With BAS Hawk Counter Arthur W. Green and Westmoreland Sanctuary's Adam Zorn at Chestnut Ridge Hawk Watch, Arthur Butler Sanctuary, 261 Chestnut Ridge Road, Bedford Corners, Co-sponsored by Westmoreland Sanctuary. Sundays, September 19, 8 A.M.; October 3, 9 A.M.; October 17, 9 A.M. Spend a very special Sunday morning watching the spectacular annual fall raptor migration from this vantage point high above Route I-684. Expert hawk watchers will be on hand to identify the hawks, falcons and other birds of prey that use this route on their journey south. Enjoy a complimentary light breakfast with fellow hawk enthusiasts.

Please register by calling 914-666-8448. Ages: 12 to Adult.

Directions: From I-684; take exit 4 (Route 172) west toward Mt. Kisco. After 100 yards, turn left onto Chestnut Ridge Road and go 1.2 miles. Turn right over bridge into parking area. Follow sign. The hawk watch bleachers sit on a ridge high above I-684 and are reached by a moderate-strenuous 10-15 minute trail hike.

Volunteer Spotlight—Bonnie Barrett

This issue the Volunteer Spotlight shines on the new chair of the Native Garden Committee. Bonnie Barrett succeeds Nannette Orr, who did much of the design of the Native Plant Garden at Bylane. A relative newcomer to the area — Bonnie and her husband, Brad, moved to North Salem six years ago from Morris County, New Jersey—Bonnie started her career as a landscape designer after her children left home. Her now full-time business focuses on transforming overgrown, linear front yards into more personal and interesting landscapes that include native species. "My passion is trees," says Bonnie, who has turned her own front lawn into a woodland setting with birches, crabapples, and spruces with lawn only as paths to walk around the islands. Her interest in birds and birding was sparked by a pair of Barred Owls that resided on her property in New Jersey for years, and she was thrilled to discover nesting Bobolinks down the road from her house in North Salem this spring. Bonnie became involved with Bedford Audubon by attending the monthly lectures; later she joined Tait's bird walks, where she met Nannette. Her other passion is her granddaughters Hadley and Molly, who live in Rye with their parents.



CONTINUED ON PAGE 6

“Being thrust into the position of Native Garden Chair has been a stretch for my limited abilities and background,” says Bonnie in her typical modest fashion, “but I hope to learn as I go and there are so many dedicated, well-educated and helpful resources at Bedford Audubon that make the job easier. Bylane is such a great canvas.” Indeed, Bonnie has already proven she is up to the job with her native garden classes at Bylane. In addition, she has started leading garden-related field trips (see page 4 for highlights of the Lasdon Arboretum trip and on this page for information about the September 8 excursion to High Line Park, Manhattan with Bonnie at the helm). Bonnie, thank you for all the work you do at Bedford Audubon! We are so glad to have you on board!



FIELD TRIPS

Unless otherwise indicated, please register with Joan E. Becker:
jebecker@bedfordaudubon.org or 914-232-4806.

Many trips meet at or leave by carpool from Bylane Farm, 35 Todd Road, Katonah. (From Route 35, take Route 22 north. Go ½ mile and turn right on to Todd Road. Follow to #35.)

Note: Each trip is given one of three levels of difficulty: Easy, Moderate, or Strenuous. Please discuss your level of mobility with the registrar to ensure that the trip is appropriate for you.

“Hug-the-Hudson”—Excursion to NYC’s High-Line and Fort Tryon Parks With Bonnie Barrett, BAS Native Garden Committee Chair
Wednesday, September 8, 10 A.M.–4 P.M. Carpool from Bylane, 8:15 A.M., return 5 P.M.

Join us for a morning walk along Manhattan’s exciting new High Line Park—“the park in the sky”—a converted section of the former elevated freight railroad on the lower West Side. The planting design, mainly native species, was inspired by the self-seeded landscape that grew on the out-of-use-elevated rail tracks. We will then follow the Hudson north to Fort Tryon Park for lunch at the non-profit New Leaf Restaurant (or picnic if you prefer). Afternoon park highlights in this tip-of-Manhattan historic gem include copious plantings, heather gardens, and sweeping river views. Let’s see how many migrating warbler species we can spot! Transportation and dining expenses apply. Space is limited, so please register early. *Level of difficulty: Moderate.*

Sharon Audubon Center With Bob Barbieri (Litchfield Hills Audubon) and a Tour of McEnroe Farm, Millerton, NY With Cathy Clare
Wednesday, September 15, 10 A.M.–3 P.M. Carpool from Bylane at 9 A.M. Expected return 4:30 P.M.

The Sharon Audubon Center in Connecticut’s idyllic Litchfield Hills has over 11 miles of scenic trails, with forests, meadows, wetlands, ponds, and streams to delight birders and nature lovers. Its raptor aviaries house 21 non-releasable birds of prey. We will then visit nearby McEnroe Organic Farm for lunch (pack or purchase). As a special treat, we will have a guided tour arranged by the farm’s owner, a BAS member, and co-led by our own Cathy Clare. The 800-acre farm produces premium organic meats, vegetables, and compost. The McEnroe Market sells a wide selection of organic and regional products including cheeses, milk, bread, vegetables, fruits, chips, seasonings, and herbs. *Level of difficulty: Easy to moderate.*

Field Trip to Greenwich Point Park, Greenwich With Tait Johansson
Friday, September 17, 7 A.M.–11 A.M. Carpool from Bylane at 6 A.M. or meet at Greenwich Point parking lot by the concession stand near the entrance at 7 A.M.

Located on the Atlantic Flyway, Greenwich Point is a choice location for watching migrating birds, especially warblers in the fall. Bring binoculars and a snack. *Level of difficulty: Easy.*

Field Trip to Fernald Forest, Rhinebeck, NY With Tait Johansson and Ryan MacLean

Saturday, September 25, 8 A.M.–1 P.M. Carpool from Bylane at 6:45 A.M. Our focus will be on flycatchers, fall warblers, and other passerines as we explore this 192-acre forest preserve. The tower at the Mt. Rutsen summit is a good place to watch migrating hawks over the Hudson River and to

enjoy the autumn panorama. Bring binoculars, snack/lunch. *Level of difficulty: Moderate to strenuous.*

Field Trip to the Lighthouse Point Park Hawk Watch, New Haven, CT With Tait Johansson

Thursday, September 30, 8 A.M.–2 P.M. Carpool from Bylane Farm at 7 A.M. Depending on the hawk flight, return around 3 P.M.

Lighthouse Point is one of the most rewarding bird watching locations along the East Coast. Thousands of songbirds and birds of prey are seen in this migratory oasis along Morris Creek. We expect to see Sharp-shinned and Cooper’s Hawks, American Kestrel, Northern Harrier, and Osprey. Driving directions: <http://tinyurl.com/hawkwalk>. Bring binoculars and lunch. *Level of difficulty: Easy.*

Field Trip to Stonecrop Gardens and the Glynwood Center, Cold Spring, NY With Botanist Carol Levine

Wednesday, October 6, 10 A.M.–2:30 P.M. Carpool from Bylane at 9:30 A.M. Return to Bylane around 3 P.M.

Stonecrop features attractive woodland and water gardens, a grass garden, raised alpine stone beds, cliff rock gardens, a conservatory, and more. After Carol guides us through the gardens, we’ll enjoy a picnic lunch overlooking the Hudson Highlands. At the nearby Glynwood Center, guided by a Glynwood employee, we will have a 1½ hour tour of the features and activities at the farm. Highlights include a spectacular 150-year old barn, impressive country house, and an array of sustainably maintained gardens that feed as many as 50 local families. Bring lunch. *Level of difficulty: Moderate.*

Nature Hike at Mountain Lakes Park, North Salem With Paul Lewis
Tuesday, October 19, 10 A.M.–1 P.M. Carpool from Bylane at 9:30 A.M. or meet at the parking area inside the park on the left at 10 A.M.

Long-time BAS member, knowledgeable birder, and life-long South Salem resident, Paul Lewis will lead us through this county park, relating the history of the land and pointing out birds of interest. Bring binoculars and a picnic lunch to enjoy while taking in the panorama of fall foliage and Lakes Waccabuc and Osaleta. *Level of difficulty: Easy to moderate.*

Bird Walk at Croton Point Park, Croton-on-Hudson With Tait Johansson
Saturday, October 23, 7:30 A.M.–11:15 A.M. Carpool from Bylane at 6:45 A.M. or meet at the entrance booth at 7:30 A.M.

This walk will focus on the many species of migrating songbirds including sparrows that frequent the former landfill (last year’s trip identified 14 species of sparrow). Bring binoculars. *Level of difficulty: Easy to moderate.*

“All Things Fungal” Excursion to Cranberry Lake Preserve, West Harrison With Curator Taro Ietaka

Thursday, October 28, 10 A.M.–12 noon. Carpool from Bylane at 9:30 A.M. or meet at the Cranberry Lake Nature Center at 10 A.M.

During this walk and talk we’ll learn about the fungus lifestyle using Cranberry Lake Preserve’s abundant flora as our subject matter. Mushrooms and lichens and their identifying characteristics will be covered, with a small digression into slime molds (protists, not fungi). We’ll see birds as well. *Level of difficulty: Easy to moderate.*

“Magical Mystery Tour” With Tait Johansson and Nannette Orr
Wednesday, November 3

Bedford Audubon’s first “Leaders’ Choice” bird trip! Based on reports of unusual birds, the leaders will choose a destination 24 hours before the trip. Participants should be prepared to travel to that destination (no more than an hour-and-45 minute drive from Bylane) on a day’s notice—or join a carpool from Bylane. In November, rare birds may show up at various locations, blown off course from their regular migratory routes or for other reasons. Bring binoculars and snacks/lunch. *Level of difficulty: Moderate.*

Bird Walk at Croton Point Park With Tait Johansson

Tuesday, November 9, 7:30 A.M.–11:15 A.M. Carpool from Bylane at 6:45 A.M. or meet at the entrance booth at 7:30 A.M.

Come join us for another trip to this outstanding birdwatching location to look for sparrows and other late migrants on the former landfill. Bring binoculars. *Level of difficulty: Easy to moderate.*

Field Trip to the Beacon Institute at Dennings Point State Park, Beacon, NY With Beth Herr and Nannette Orr

Wednesday, November 17, 10 A.M.–3 P.M. Carpool from Bylane at 9 A.M. Estimated return 4 P.M.

We'll visit this impressive new facility on the banks of the Hudson River, where we will have a guided tour of the building—a model of green design—and learn about the environmental research being conducted there. We will then be guided around Dennings Point, part of Hudson Highlands State Park, with its rich cultural and archeological history; we hope to see Bald Eagles and other wildlife by the Hudson. Our last stop—after lunch at a local restaurant—will be Scenic Hudson's Long Dock Park and Beacon Point where we will admire the installation by renowned waterfront artist George Trakas. The cost of lunch applies. Space is limited, so please register early. *Level of difficulty: Easy to moderate.*

Field Trip to Edith Read Sanctuary and Marshlands Conservancy, Rye With Tait Johansson

Saturday, November 20, 7:40 A.M.–12:30 P.M. Carpool from Bylane at 7 A.M. or meet at the boathouse on Playland Lake, at Playland Amusement Park at 7:40 A.M.

These sanctuaries, located on the shore of the Long Island Sound and along the Atlantic migratory flyway, are favorite destinations for BAS field trips. At both locations we'll be looking for waterbirds (on both the lake and the beach side at Read) and landbirds in the thicket-type habitats. Bring lunch and dress warmly. *Level of difficulty: Easy.*

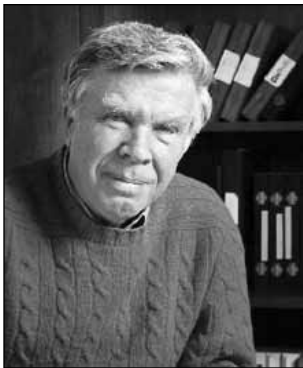


PROGRAMS

*All programs are free and open to the general public.
The monthly lectures are held at the wheelchair accessible
Katonah Memorial House, 71 Bedford Road, Katonah.
Please do not block the Fire Department access.
Park alongside the meeting house side of the driveway.*

**Lessons from a Bird's Brain With Fernando Nottebohm, Ph.D.,
Wednesday, October 13, 7:30 P.M.**

Songbirds learn their song by imitation and improvisation in a manner reminiscent of how humans learn the sounds of speech. Dr. Nottebohm's



pioneering studies of the song system of songbirds provided the first animal model for studying the biology of vocal learning. His lecture will focus on how birds learn their songs and how song-learning studies led to the discovery that the human adult brain can replace neurons and the clinical importance of this observation. He will explain, in layman's terms, how the study of bird brains has provided irrefutable evidence that new nerve cells are constantly born in the adult vertebrate brain, where they can add to an existing population of cells or replace those of the same kind that have died.

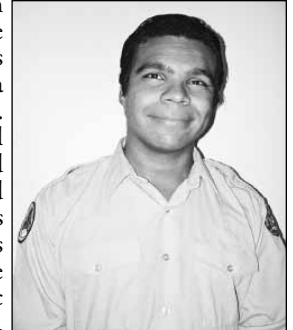
Dr. Nottebohm has been a professor at Rockefeller University since 1976. Currently he is the head of the Laboratory of Animal Behavior. His research moves along two tracks—the biology of vocal learning and the biology of neuronal replacement. They intertwine in the song system of songbirds. At the Center for Field Research in Ethology and Ecology in Millbrook, New York, Dr. Nottebohm's team observes the behavior, anatomy, and molecular biology of free-ranging animals living in nature and of animals in simpler laboratory settings. Dr. Nottebohm has received numerous prestigious awards for his work, including the Benjamin Franklin Medal in Life Science and the Lewis S. Rosenstiel

Award for Distinguished Work in Basic Medical Science. He was elected to the National Academy of Sciences in 1988.

The Asian Long-Horned Beetle and Other Alien Tree-Killers With Michael Singho

Wednesday, November 10, 7:30 P.M.

Hitching a ride in cargo shipments from China, the Asian Long-Horned Beetle is believed to have arrived in North America in the mid 1990s. The favorite targets for its destructive attacks in this country are primarily maples, but include a large variety of our native hardwood trees. Although there is a preventative chemical treatment, there is no cure, so the affected trees must be cut down and the wood destroyed. Removal of tens of thousands of trees has taken place in Massachusetts and New York City. Another alien, the Emerald Ash-Borer, has wreaked havoc in mid-western states such as Michigan, Illinois, and Ohio since the early 2000s. It was detected in New York's Ulster County last year and in the Albany area earlier this year.



Michael will describe the life stages of the beetle and will bring treated samples of infested trees and look-alike insects. He will show pictures of damage to trees and explain what to watch for. Michael will also provide tips of what you can do if you think you have an Asian Long-Horned Beetle infestation. ID cards and other educational materials will be available.

Michael Singho is a horticultural inspector with the New York State Department of Agriculture & Markets. He received his bachelor's degree in Biology and Philosophy from Oberlin College in Ohio and did his internship in larval ecology at the University of Washington's Friday Harbor Laboratory on San Juan Island in Washington State. He has spent the last eight years working in both the survey and regulatory aspects of the Asian Long-Horned Beetle Eradication Program. When he's not chasing beetles, Michael keeps busy writing science fiction and studying foreign languages. He is fluent in Japanese and is currently studying Italian.

**Identification of Woody Plants in Winter With Botanist Carol Levine
Wednesday, December 8, 7:30 P.M.**

The challenge of identifying woody plants in winter can add to the enjoyment of a walk in the woods after the leaves have dropped from the trees. Many characteristics aid in the identification at this time of year, and this talk will introduce you to some of them. In some species the bark is most distinctive; in others the twig, including buds and leaf scars, will prove most helpful. Another help is a pleasant odor that appears after scratching the twig. This program will include some hands-on work with specimens followed by a slide show that will show the beauty and diversity of the characters of the species of northeastern woody plants as they appear in winter.



Carol Levine is a botanist and long-time instructor at The New York Botanical Garden, Bartlett Arboretum and Gardens, and the University of Connecticut where she taught courses in field botany in spring, autumn, and winter among many other subjects. She has been a board member at Bartlett Arboretum and Gardens since 1984. Carol is also an accomplished photographer and author of *A Field Guide to Wildflowers in Winter*, which was published in 1995 by Yale University Press and will be available for purchase at the lecture and can be signed by the author.



Bedford Audubon Membership

Yes, I would like to join the Bedford Audubon Society. My local chapter membership will help support local conservation efforts, programs, and sanctuaries. (Send this form with a check made out to **Bedford Audubon Society** or **fill in the MasterCard/VISA credit card information below.**)

Please check your membership category.

- New Member or Renewal \$30 Supporter \$50
- Gift Membership \$30 Contributor \$100
- Student \$15 Patron \$500
- I wish to make an additional donation of _____
- I do not wish to have my name or contact information shared with outside organizations.

Please see if your company has a matching gifts program!
Your information or gift recipient's information

Name _____ Address _____
 City _____ State _____ Zip _____
 Phone _____

Credit Card Information

MasterCard VISA
 Name as it appears on card _____
 Street Address _____
 City _____ State _____ Zip _____
 Account# _____
 Expiration date _____ Phone _____
 Security code (3 digit number on back of card in signature area) _____
 Signature _____ Date _____

Mail to: Bedford Audubon Society, 35 Todd Road, Katonah, NY 10536

Enter your e-mail address here and we add you to our e-mail list for alerts on programs, field trips, and other items of local interest.

Referred by: _____

Bedford Audubon Society, Inc.
35 Todd Road
Katonah, NY 10536

Postmaster: Address Correction Requested

NONPROFIT ORG
 U.S. POSTAGE PAID
 WHITE PLAINS, NY
 PERMIT NO. 4961

BAS Annual Bird Seed Sale 2010

Bedford Audubon Society's annual wild bird seed sale is fast approaching. Whether you are a regular or a casual feeder, or are only thinking about starting to feed the birds, this is the time to consider how many bags of seed you will need. Buying wild bird seed from Bedford Audubon accomplishes two things: You are guaranteed HIGH quality seed that will surely delight your backyard feathered friends, and your purchase supports your local Audubon chapter. Order forms will be mailed in early September. Orders must be received by October 23. The pick-up date will be Saturday, November 6. If you don't receive an order form by the first week of October, call Steve Ricker at 914-234-2934 or download a form from our website. Bedford Audubon now accepts MasterCard and Visa.

OR CURRENT RESIDENT

Serving Communities in Northern Westchester and Eastern Putnam Since 1913

Printed on 30% recycled paper